

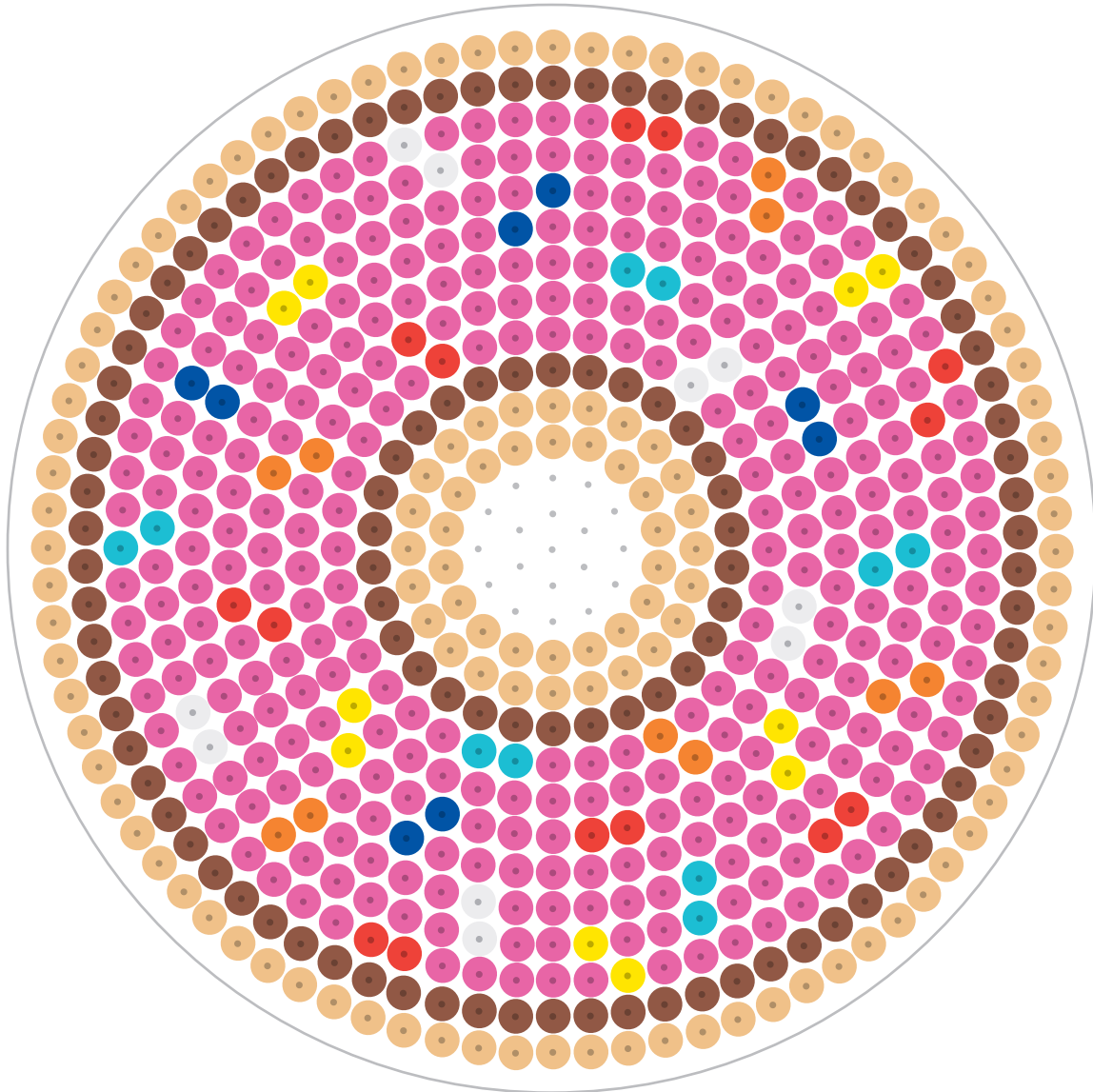
Instructions

1. Lay your Porta Craft pegboard over this design template on a flat surface.
2. Place the beads on the pegboard to match the design. Use Porta Craft tweezers.
3. Place your Porta Craft ironing paper over your bead design.
4. Set iron to a medium heat and gently run it over your ironing paper in a circular motion for about 10 seconds or until the beads have stuck together.

Adult assistance required.

5. Remove the ironing paper and allow to cool. Turn design over and repeat step 4 for the other side.

Donut



WHAT YOU NEED:

Pegboard: 15cm Circle.

Melty bead colours: Beige, brown, bright pink, aqua, blue, red, orange, yellow and white.
1 ironing paper.